



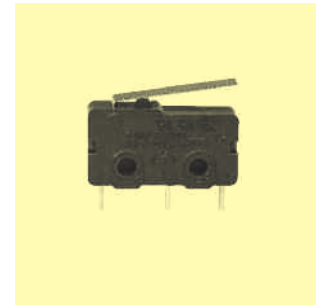
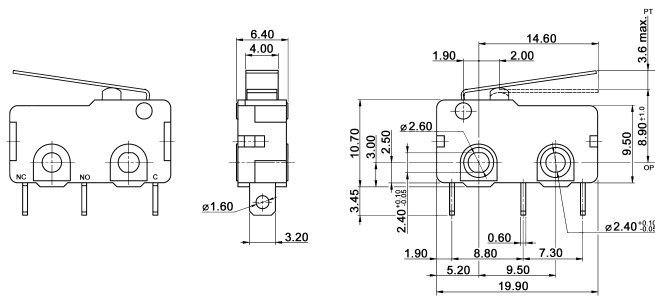
Subminiature Micro / Snap Action Switches

Specifications:

| | |
|------------------------|--|
| Contact rating: | see ordering code |
| Contact resistance: | < 100 mΩ |
| Insulation resistance: | > 100 MΩ |
| Dielectric strength: | 1000 V, 50 Hz for the duration of 1 minute |
| Operating temperature: | -25 °C to +125 °C |
| Mechanical life: | minimum 1 000 000 operations |
| Contacts: | silver-alloy, gold-plating on request |
| Terminals: | brass, silver-plated |
| Case: | PBT (UL 94 V-0), Phenolic resin on request |
| Mounting: | on pc-board, on panel |
| Timing: | non-shorting |
| Soldering conditions: | auto-soldering – max. 5 sec, max. 260 °C manual soldering – max. 3 sec, max. 350 °C |

Models: Switching function

DM-SMG 5 L01S100 on – mom



| Lever | Operation force [gf] | | | | | Operation position [mm] |
|-------|----------------------|-----|-----|-----|-----|-------------------------|
| | 50 | 100 | 150 | 250 | 350 | |
| 00 | 50 | 100 | 150 | 250 | 350 | 8.5 ± 0.3 |
| 01 | – | 40 | 50 | 80 | 110 | 8.9 ± 1.0 |
| 02 | – | 35 | 45 | 75 | 100 | 8.9 ± 1.2 |
| 03 | – | 25 | 35 | 55 | – | 8.9 ± 1.8 |
| 04 | – | 15 | 30 | 45 | – | 8.9 ± 2.0 |
| 05 | – | 35 | 45 | 75 | 100 | 12.2 ± 1.5 |
| 06 | – | 40 | 50 | 80 | 110 | 14.6 ± 1.0 |
| 07 | – | 40 | 50 | 80 | 110 | 10.8 ± 1.2 |

Ordering code:

DM-SMG -L

Rating:

- 01 0.1 A / 250 V AC, 48 V DC
- 5 5 A / 250 V AC, 30 V DC
- 10 10 A / 250 V AC

Lever:

(see following pages)

Terminals:

Operating force:

- 50 15 gf
- 100 100 gf
- 150 150 gf
- 250 250 gf
- 350 350 gf

Notes: Operation force is nominal value for pin plunger (lever code 00).

Not all operation forces are available for all ratings.

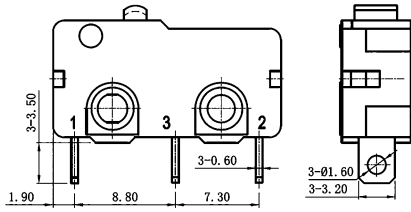
UL recognized components on request.

Subminiature Micro / Snap Action Switches

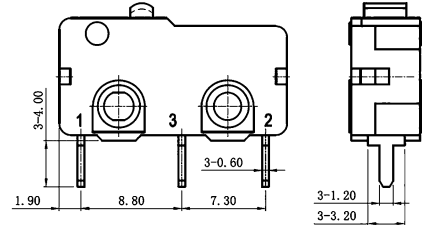


DM-SMG Terminals:

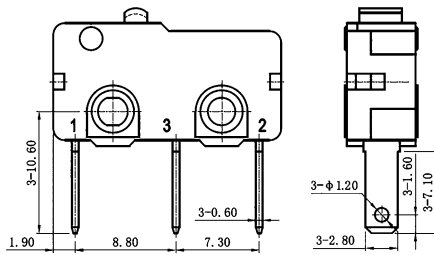
Terminal S



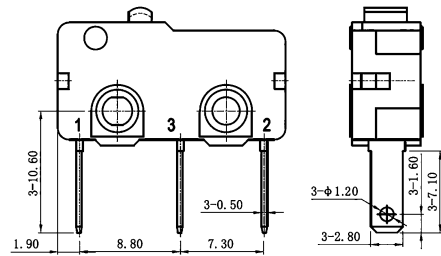
Terminal P



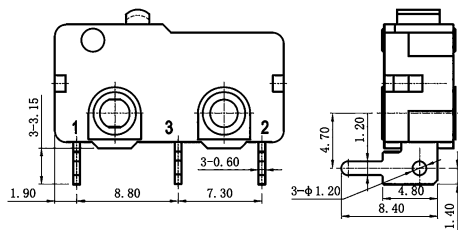
Terminal D



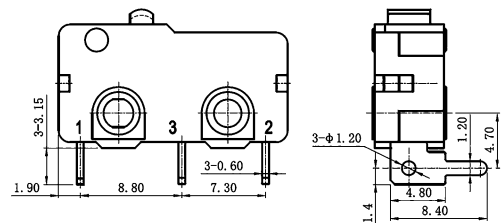
Terminal E



Terminal L



Terminal R

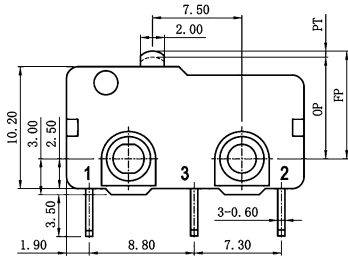




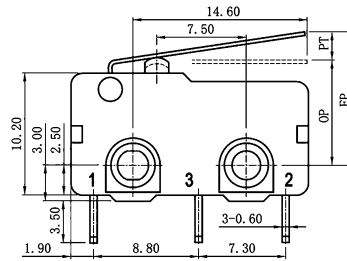
Subminiature Micro / Snap Action Switches

DM-SMG Lever:

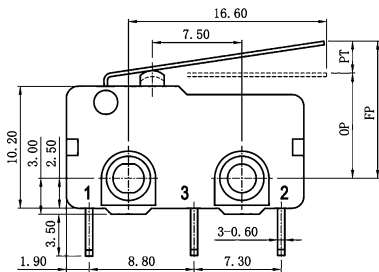
Lever 00



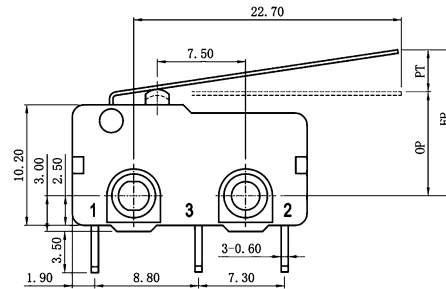
Lever 01



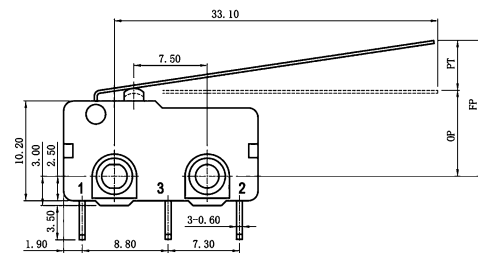
Lever 02



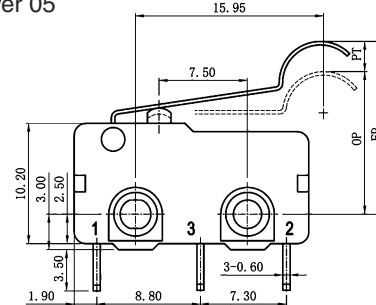
Lever 03



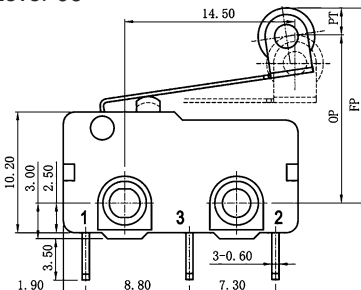
Lever 04



Lever 05



Lever 06



Lever 07

